

PALM BEACH NATIONAL GOLF AND COUNTRY CLUB ESTATES

PLAT NO. 2
IN 3 SHEETS SHEET NO. 2 COUNTY MAINTAINED

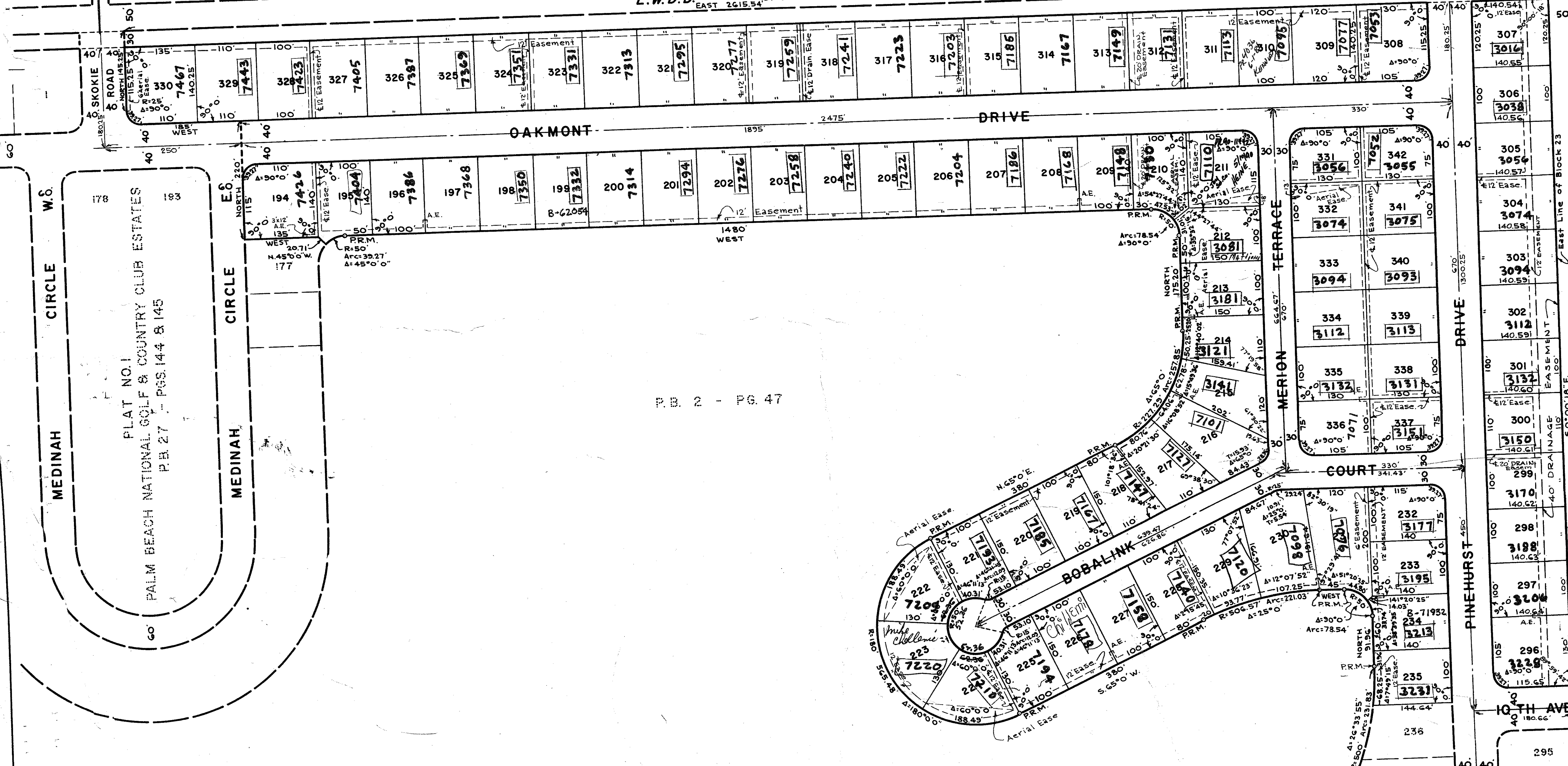
SIDEWALKS REQUIRED

153

P.B. 2 - PG. 47

L.W.D. CANAL NO. L-10

North Line of Block 23

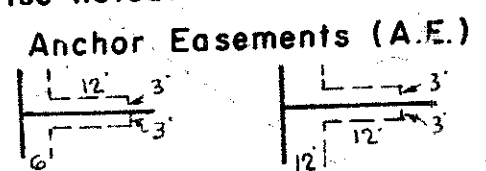


P.B. 2 - PG. 47

P.B. 2 - PG. 47
Lots 283 through 307
See
Replat 27/204

NOTE
Building Setback Lines shall be as required by Palm Beach County Zoning Regulations. There shall be no buildings or other structures placed on Utility Easements. There shall be no buildings or any kind of construction or trees, or shrubs placed on Drainage Easements.

NOTE
All Block Corners are rounded with a 25ft. radius curve unless otherwise shown. Easements are for Public Utilities, unless otherwise noted.



1000-311
27/153

**PLAT NO. 2
PALM BEACH NATIONAL GOLF & COUNTRY CLUB ESTATES
IN 3 SHEETS SHEET NO. 2**

JOHN ADAIR, JR. & ASSOC.
ENGINEERS & LAND SURVEYORS
LAKE WORTH, FLORIDA

DR. B.M.	DATE	OCT. 1962	FP-341
CK. R.W.	SCALE	1" = 100'	
APP. J.A.J.	JOB NO.	62-200	

PALM BEACH NATIONAL GOLF AND COUNTRY CLUB ESTATES

DRAWING NUMBER
27-153

DRAWING NUMBER

DRAWING NUMBER

111
110
109
108
107
106
105
104

PLAN HOLD CORPORATION - IRVINE, CALIFORNIA
REGISTERED NUMBER 00048